

Controlled Depletion Polymer Antifouling

Product Description

Interspeed 6400/6400NA* Controlled Depletion Polymer (CDP) antifoulings provide a high-end choice in CDP self-polishing fouling control range. Suitable for use at Newbuilding or Maintenance and Repair, for in-service periods of up to 36 months, they can be applied directly over existing antifoulings in good condition.

* Due to regulations, the equivalent products for North America are Interspeed 6400NA

Features

Benefits

Surface tolerant	Reduced surface preparation costs
Up to 36 months in-service periods	Suitable for varying drydocking intervals
363 g/lit VOC **	Control of solvent emissions
Durable films	Control of mechanical damage
Controlled biocide release	Tailored specification design with optimum dry film thickness
Over 60% volume solids	Increase workability Less waste of paint

** Interspeed 6400

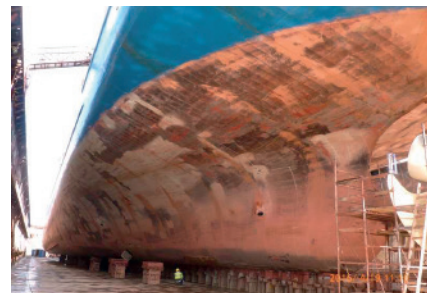
Product Information

	Interspeed 6400	Interspeed 6400NA
Color	BQA644 - Red BQA648 - Brown BQA642 - Blue BQA643 - Green BQA649 - Black	BQA674 - Red BQA679 - Black
Surface preparation	Interspeed 6400 should always be applied over a recommended primer coating scheme.	Interspeed 6400NA should always be applied over a recommended primer coating scheme.
Volume solids	60% ± 2% (ISO 3233:1998)	60% ± 2% (ASTM D2697-86)
Typical film thickness	75 - 150 microns dry (125 - 250 microns wet)	75 - 125 microns dry (125 - 208 microns wet)
Time to flooding	8 hours @ 25°C	8 hours @ 25°C
Minimum application temperature	-5°C	5°C
Method of application	Airless Spray, Brush, Roller	Airless Spray, Brush, Roller

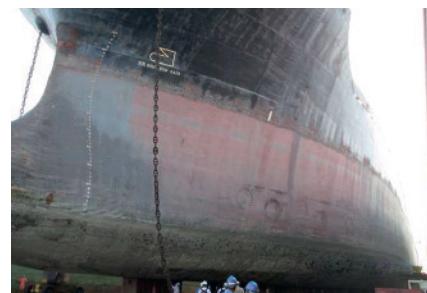
CDP Technology : In-service Performance



37 months performance on a 8,492DWT Bulker, Mediterranean and Red Sea trading routes



Performance after 36 months on an 8,600DWT container vessel trading in North Europe and USA routes



27 months performance on a 37,227DWT Bulker, Persian Gulf trading route

To find out more visit: www.international-marine.com

Controlled Depletion Polymer Antifouling

Binder Technology

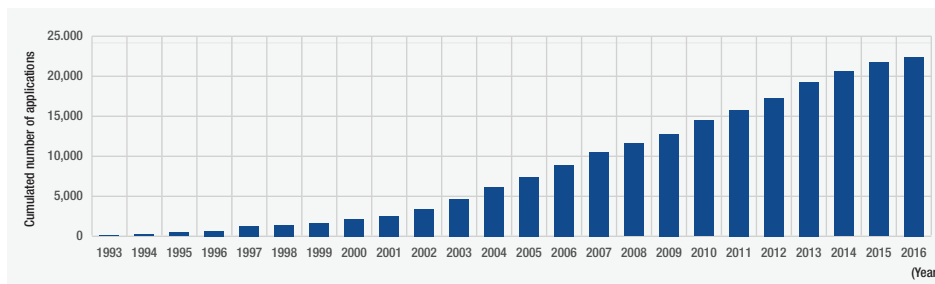


Rosin Collection

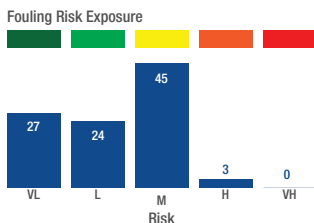
Rosin is derived from trees and has been used for over 100 years in antifouling paints, due to its slight solubility in seawater. Modern “Soluble Matrix” antifouling are commonly referred to as CDP antifouling. The soluble nature of the rosin together with the biocide package ensures an adequate supply of biocide release rate to keep the performance above the critical release rate.

Track Record

Interspeed 6400/6400NA evolved from the Interspeed range, which has an extensive track record spanning over 23 years with more than 22,000 applications



Interspeed 6400 Performance Case Study



- Performance on a 4,301 DWT General Cargo vessel after 38 months in-service.
- Trading route and fouling risk exposure indicated via Intertrac.
- Excellent performance after trading 48% of time in Medium / high fouling challenge locations.

CDP Technology : In-service Performance



32 months performance on a 26,288DWT Container, South East Asia trading routes



36 months performance on a 4,000DWT General Cargo, Northern Europe trading routes



22 months performance on a 3,007DWT General Cargo, North Africa coastal trading routes



36 months performance on a 1,873DWT General Cargo, North Europe and North Asia trading routes

For each of our products the relevant Product Data Sheet, Material Safety Data Sheet and package labelling comprise an integral information system about the product in question. Copies of our Product Data Sheets and Material Safety Data Sheets are available on request or from our website.

Unless otherwise agreed in writing, all products supplied and technical advice or recommendations given are subject to the Conditions of Sale of our supplying company and the provisions of the relevant product data sheet.

To find out more visit: www.international-marine.com